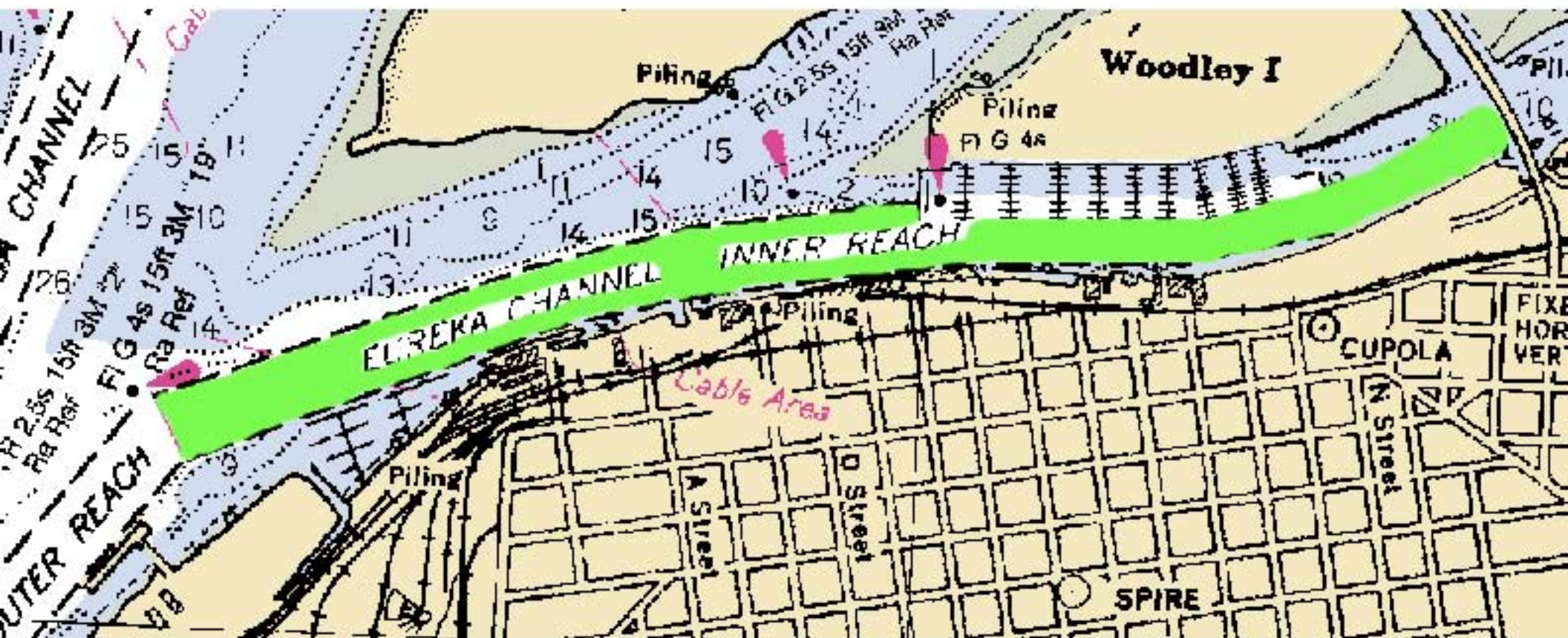


NO WAKE AREA (shown in green)

From Samoa Bridge to West Side of Eureka Public Marina

Also use extreme caution around the two fueling terminals in Humboldt Bay
Englund Marine and the Chevron Marine Terminal



The City of Eureka Municipality Code Section 100.14

(B) It shall be unlawful for any person to operate a vessel at a speed that generates a noticeable wake within the Eureka Inner Reach Channel, defined as that waterway along the Eureka mainland between the southern section of the Samoa Bridge and the westernmost extension of Eureka's Small Boat Basin.

Section 100.99 PENALTY. Whoever violates any provision of this chapter shall be guilty of a misdemeanor, and shall be subject to a fine not exceeding \$1,000. Each day any person is in violation shall constitute a separate offense punishable as provided herein. ('63 Code, § 11-1.601) (Ord. 336-C.S., passed 3-18-81)